

# SECTION 17; TOWNSHIP 39S; RANGE 20E



SARASOTA COUNTY, FLORIDA



LOCATION MAP

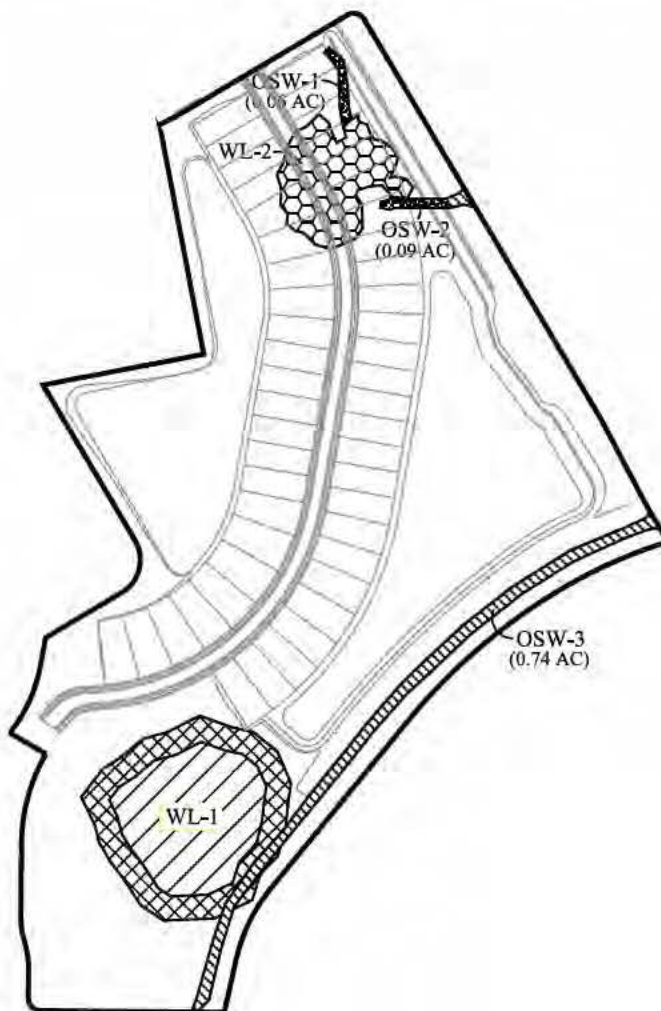
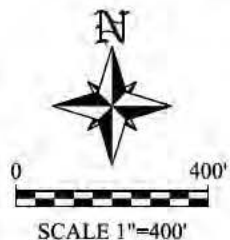
16-026 / APRIL 28, 2016

## STONEYBROOK AT VENICE POD J

LOCATION MAP

**IWA**  
Ian Vincent & Associates  
Environmental Consulting Services

SECTION 17; TOWNSHIP 39S; RANGE 20E



LEGEND

PRESERVE

	WETLAND PRESERVE	1.69 Ac ±
	OSW PRESERVE	0.77 Ac ±
	UPLAND BUFFER PRESERVE	1.25 Ac ±
	<b>TOTAL</b>	<b>3.71 Ac ±</b>

IMPACTS

	WETLAND FILL	1.06 Ac ±
	OSW FILL	0.12 Ac ±
	<b>TOTAL</b>	<b>1.18 Ac ±</b>

NOTES:

1. FOR PERMIT USE ONLY, NOT FOR CONSTRUCTION.
2. PROJECT BOUNDARY IS APPROXIMATE AND WAS OBTAINED FROM SARASOTA COUNTY GIS.
3. MAPPING APPROXIMATE AND BASED ON INTERPRETATION OF 2014 AERIAL PHOTOGRAPHY AT 1"=400' SCALE.
4. THE DELINEATION OF ANY ON-SITE WETLANDS, SURFACE WATERS, AND/OR OTHER SURFACE WATERS IS PRELIMINARY AND SUBJECT TO REVIEW/APPROVAL BY APPLICABLE REGULATORY AGENCIES.

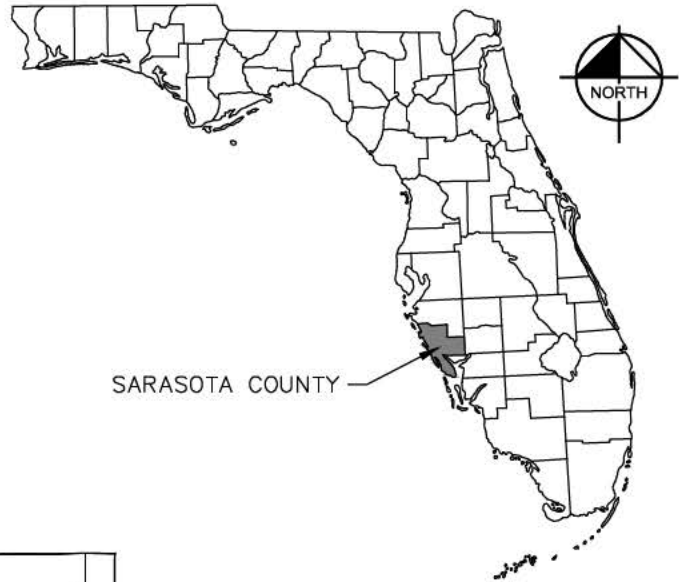
16-026 / MARCH 1, 2017

STONEBROOK AT VENICE POD J  
WETLAND IMPACT / PRESERVE MAP



# LOCATION MAP

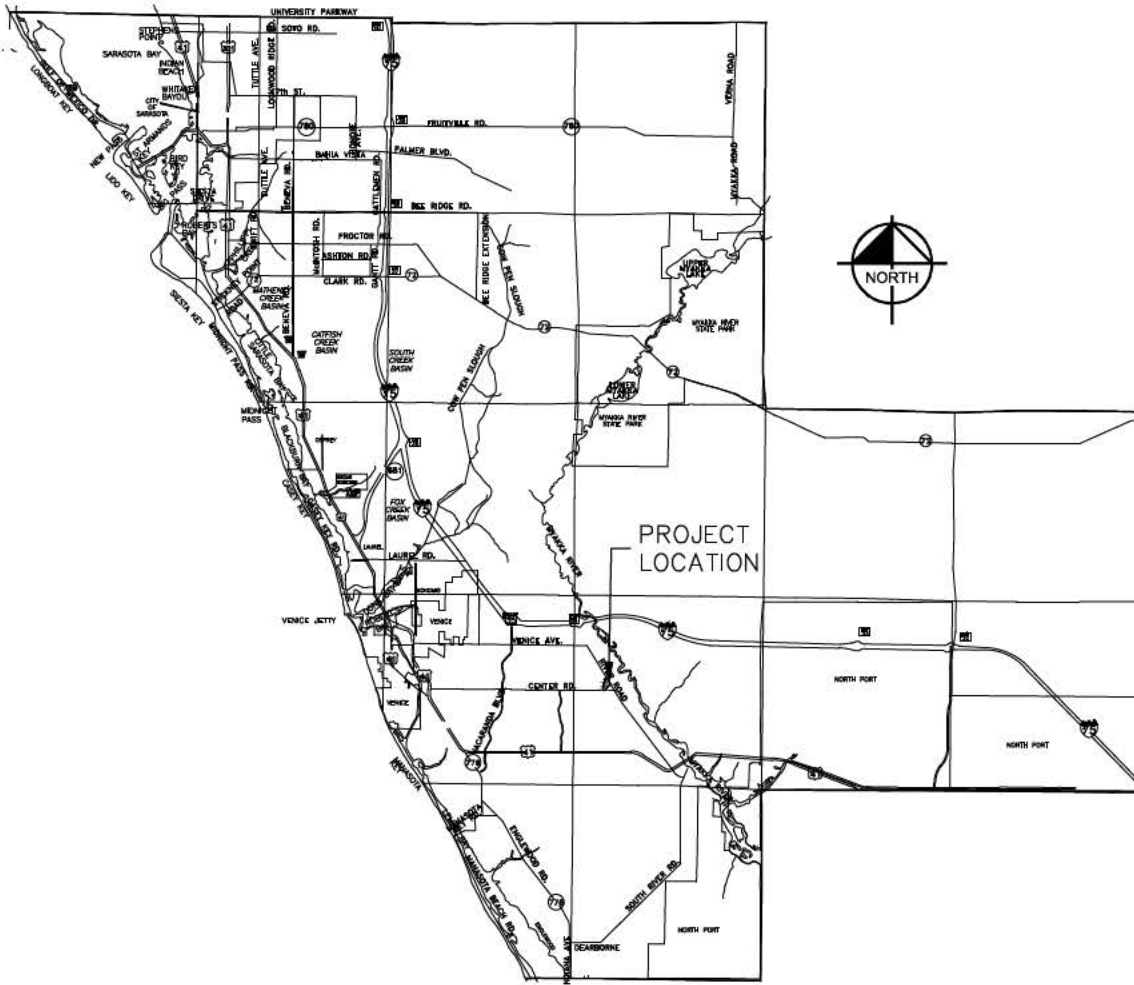
Section:17 Township: 39S Range: 20E  
 Section:18 Township: 39S Range: 20E



SARASOTA COUNTY

Sheet List Table	
Sheet Number	Sheet Title
01	LOCATION MAP
02	SITE MAP
03	ACTIVITY AREA A
04	ACTIVITY AREA B
05	ACTIVITY AREA C

## LOCATION MAP



Plotted By: Gremaux, Ty Sheet Set: POD J ACDE EXHIBITS Layout:01 LOCATION MAP April 14, 2017 03:36:10pm K:\SAR\_Civil\048032127 - IPO 113 SBV Pod J\CAD\PlanSheets\ACDE\loc\_rmap.dwg

APPLICATION BY:  
 LENNAR HOMES, LLC.

PREPARED BY:  
 KIMLEY-HORN AND ASSOC., INC.  
 CA 00000696

ENGINEER TY E. GREMAUX, P.E.  
 FL. CERT. NO. 72394

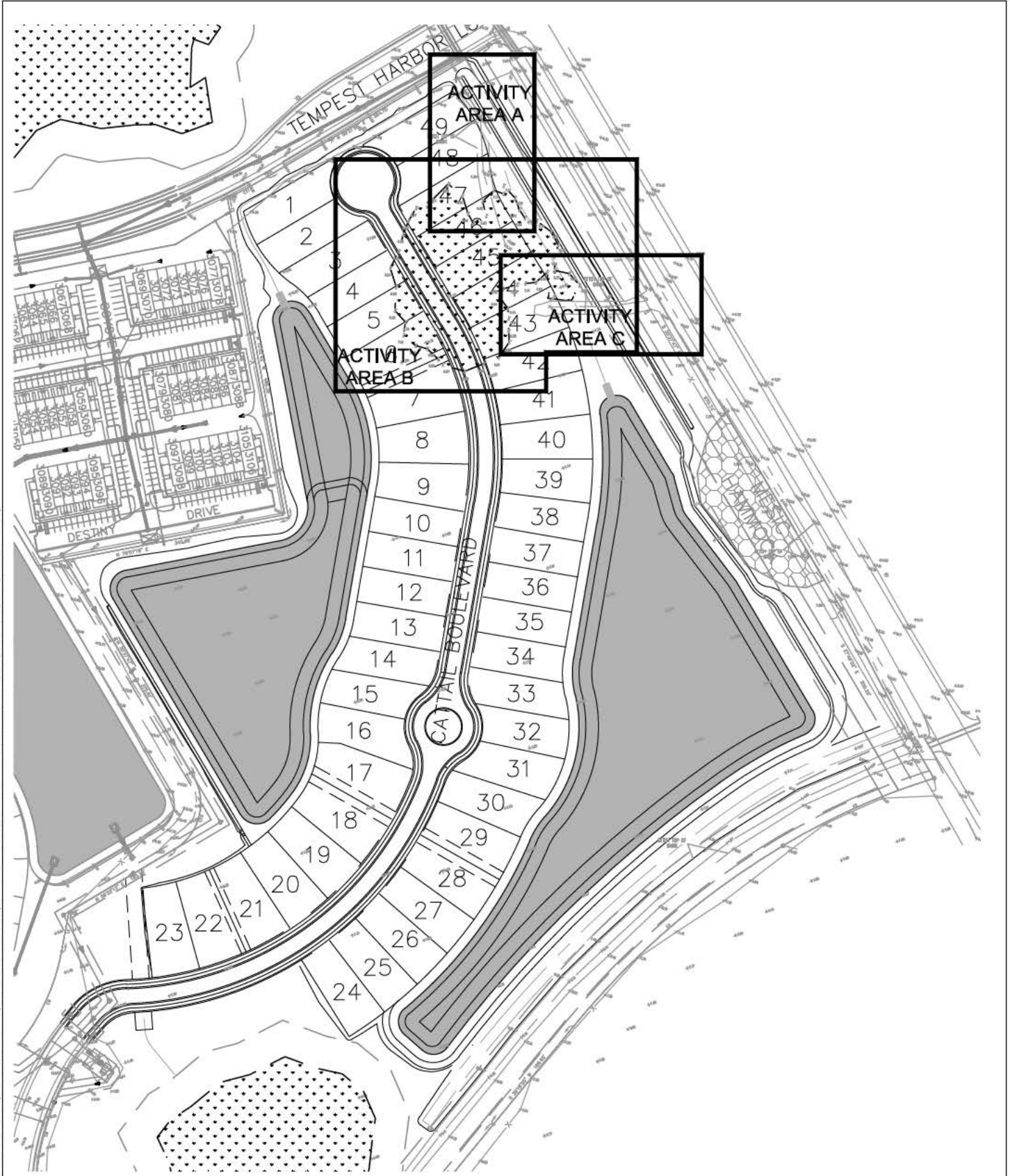
REVISIONS

U.S. ARMY CORPS OF ENGINEERS  
 DREDGE & FILL APPLICATION  
 FOR

**STONEBROOK AT  
 VENICE, POD J**

SARASOTA COUNTY FLORIDA  
 DRAWING 01 OF 05

Plotted By: Gremaux, Ty Sheet Set: POD J ACDE EXHIBITS Layout: 02 SITE MAP April 14, 2017 03:36:32pm K:\SAR\_Civil\046032127 - IPO 113 SBV Pod J\ACAD\PlanSheets\ACDE\02 SITE MAP.dwg



APPLICATION BY:  
LENNAR HOMES, LLC.

PREPARED BY:  
KIMLEY-HORN AND ASSOC., INC.  
CA 00000696

ENGINEER TY E. GREMAUX, P.E.  
FL. CERT. NO. 72394

REVISIONS

U.S. ARMY CORPS OF ENGINEERS  
DREDGE & FILL APPLICATION  
FOR  
**STONEBROOK AT  
VENICE, POD J**  
SARASOTA COUNTY FLORIDA  
DRAWING 02 OF 05

# ACTIVITY AREA A



SCALE:  
1" = 40' HORIZ.  
1" = 4' VERT.

## LEGEND:



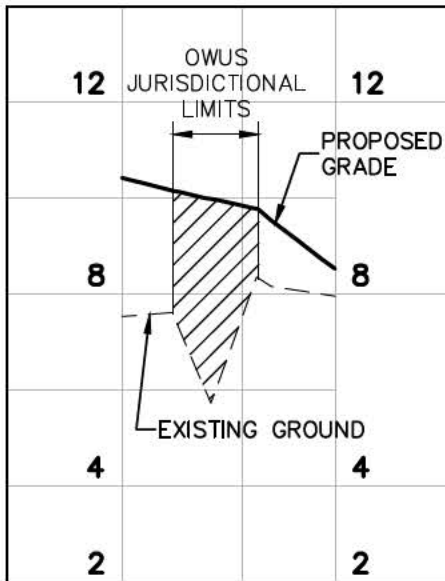
SECTION LOCATION



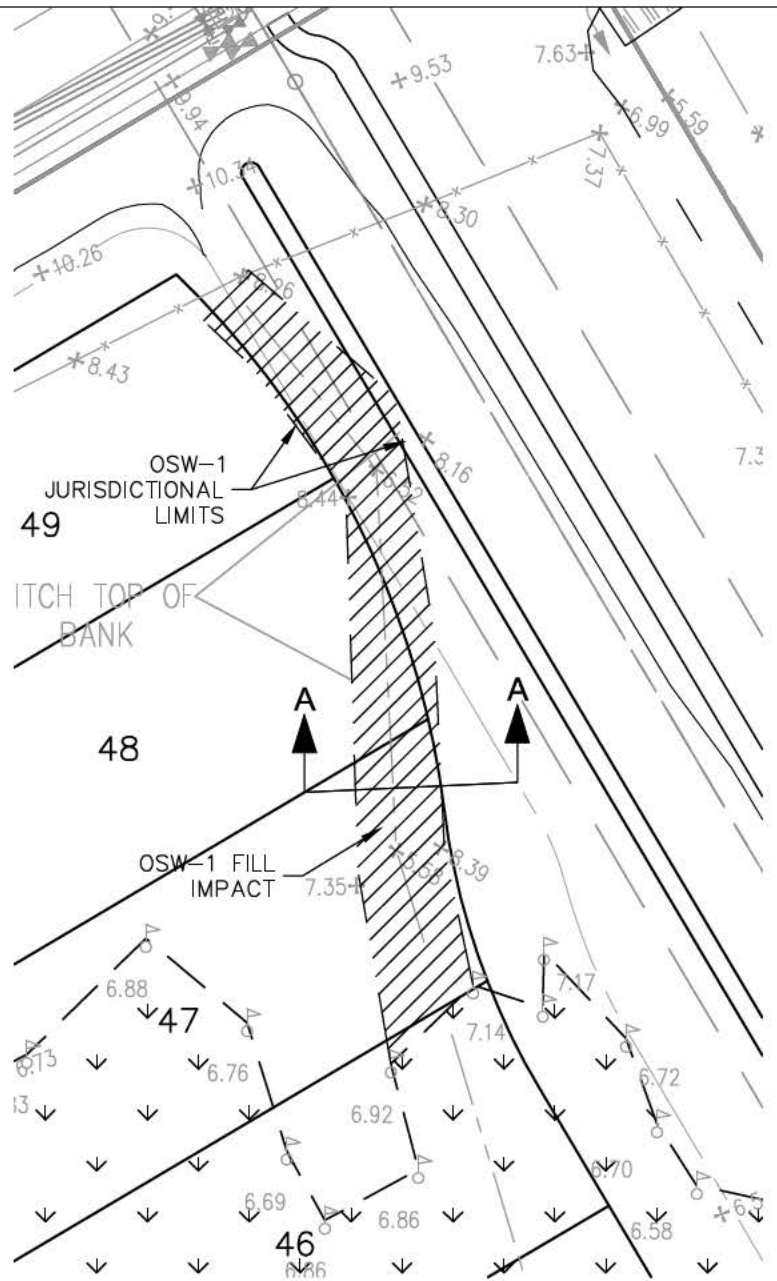
OWUS IMPACT-FILL (0.06 AC.)

330 CY OF FILL

0 CY OF EXCAVATION



SECTION A-A



Plotted By: Gremaux, Ty Sheet Set: POD J ACDE EXHIBITS Layout: 03 ACTIVITY AREA A April 14, 2017 03:36:54pm K:\SAR\_G\ivil\048032127 - IPO 113 SBV Pod J\CAD\PlanSheets\ACDE\03 ACTIVITY AREA A.dwg

APPLICATION BY:  
LENNAR HOMES, LLC.

PREPARED BY:  
KIMLEY-HORN AND ASSOC., INC.  
CA 0000696

ENGINEER TY E. GREMAUX, P.E.  
FL. CERT. NO. 72394

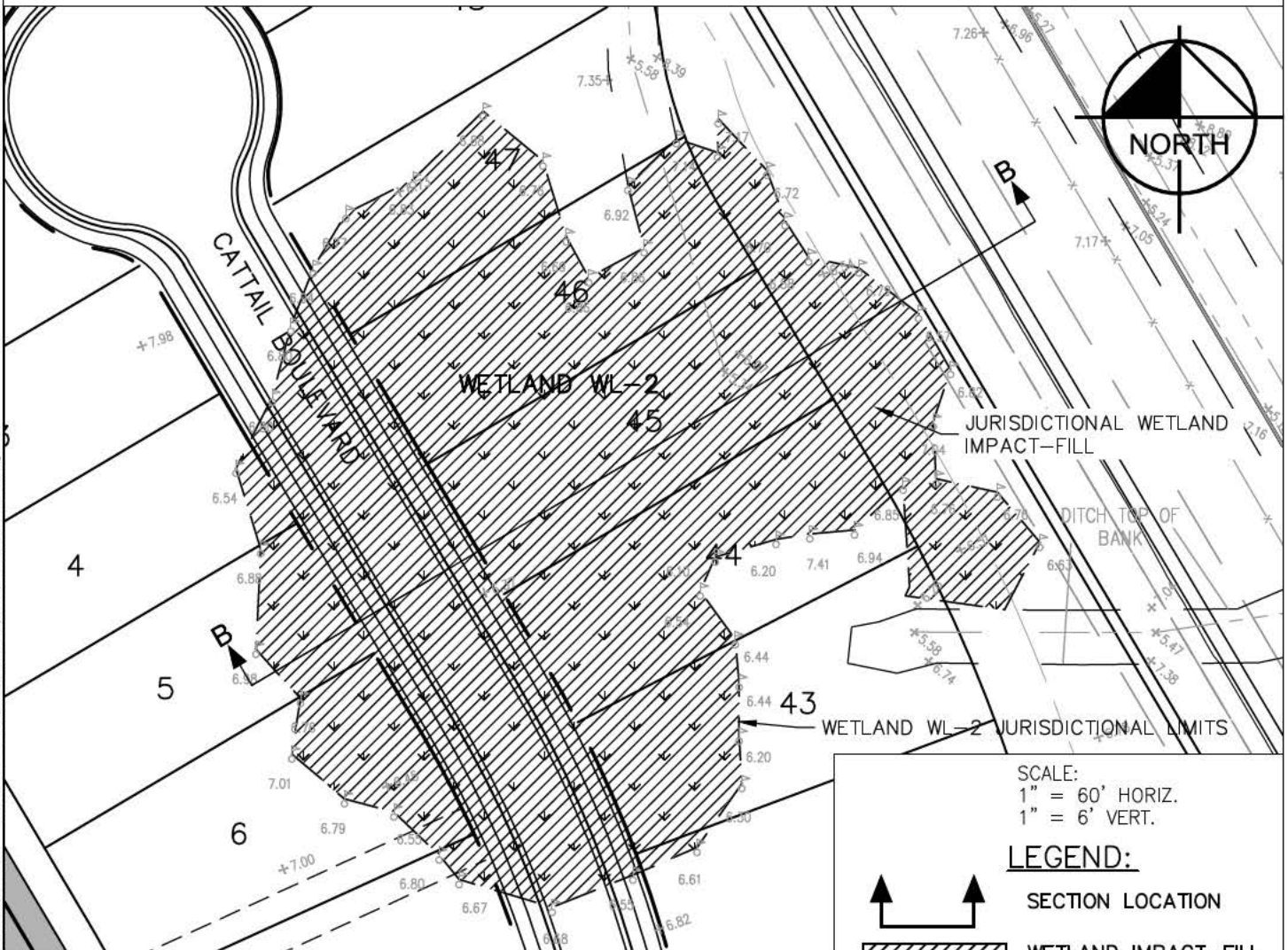
REVISIONS

U.S. ARMY CORPS OF ENGINEERS  
DREDGE & FILL APPLICATION  
FOR

**STONEBROOK AT  
VENICE, POD J**

SARASOTA COUNTY FLORIDA  
DRAWING 03 OF 05

# ACTIVITY AREA B




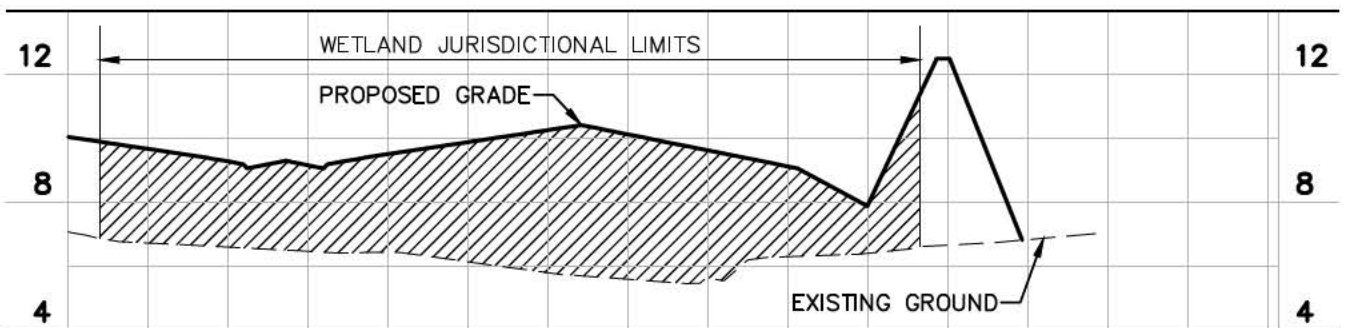
5,130 CY OF FILL                      0 CY OF EXCAVATION

SCALE:  
 1" = 60' HORIZ.  
 1" = 6' VERT.

**LEGEND:**

↑                      ↑  
 SECTION LOCATION

 WETLAND IMPACT-FILL  
 (1.06 AC.)



SECTION B-B

Plotted By: Gremaux, Ty Sheet Set: POD J ACOE EXHIBITS Layout: 04 ACTIVITY AREA B April 14, 2017 03:37:16pm K:\SAR\_Civil\048032127 - IPO 113 SBV Pod J\CAD\PlanSheets\ACOE\04 ACTIVITY AREA B.dwg

APPLICATION BY:  
 LENNAR HOMES, LLC.

PREPARED BY:  
 KIMLEY-HORN AND ASSOC., INC.  
 CA 0000696

ENGINEER TY E. GREMAUX, P.E.  
 FL. CERT. NO. 72394

REVISIONS

U.S. ARMY CORPS OF ENGINEERS  
 DREDGE & FILL APPLICATION  
 FOR

**STONEBROOK AT  
 VENICE, POD J**

SARASOTA COUNTY FLORIDA  
 DRAWING 04 OF 05

